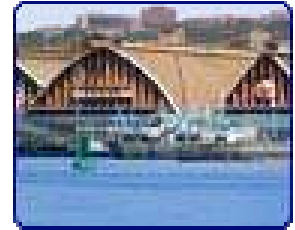


SHUKELA TRAINING CENTRE (PTY) Ltd

SASTA CONGRESS 2009

Training Needs in the African Sugar Industries

Assess and Consolidate



Tim Bamber



Training Provided

Engineering Training

- Apprenticeships & Skills Programmes
- Trade Tests

Process Training

- Theoretical Modules

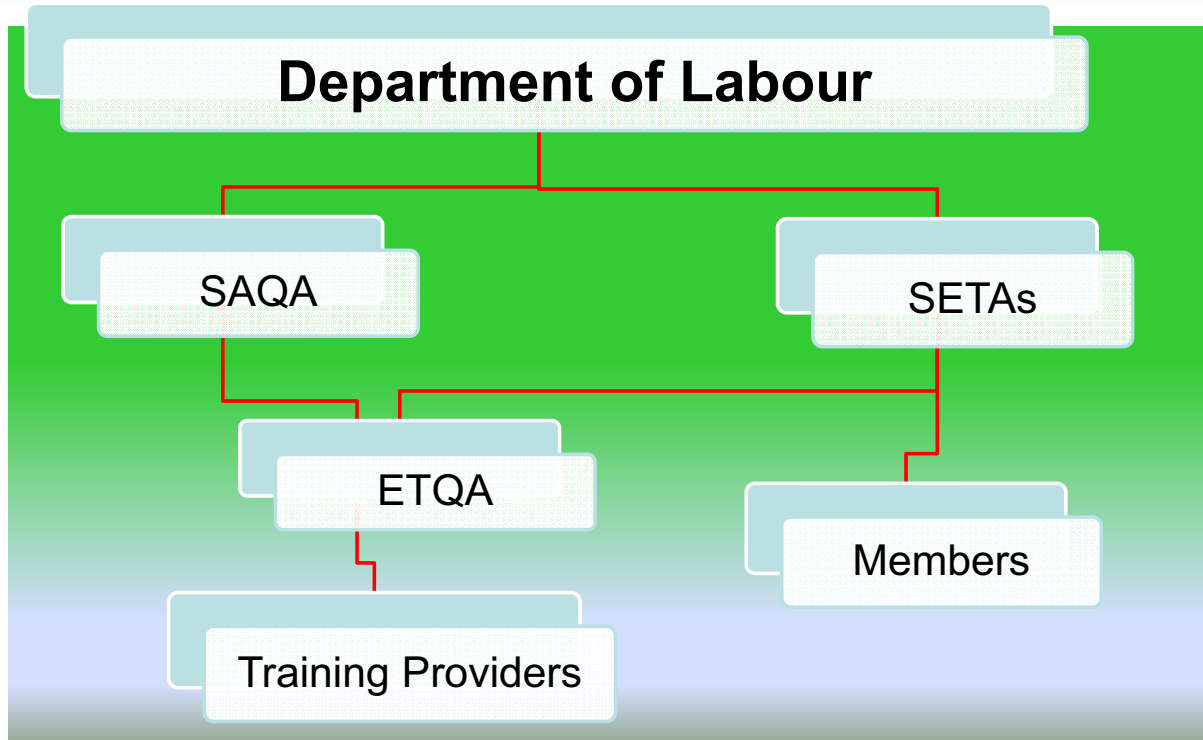
Agricultural Training

- Plant Production
- Skills Training





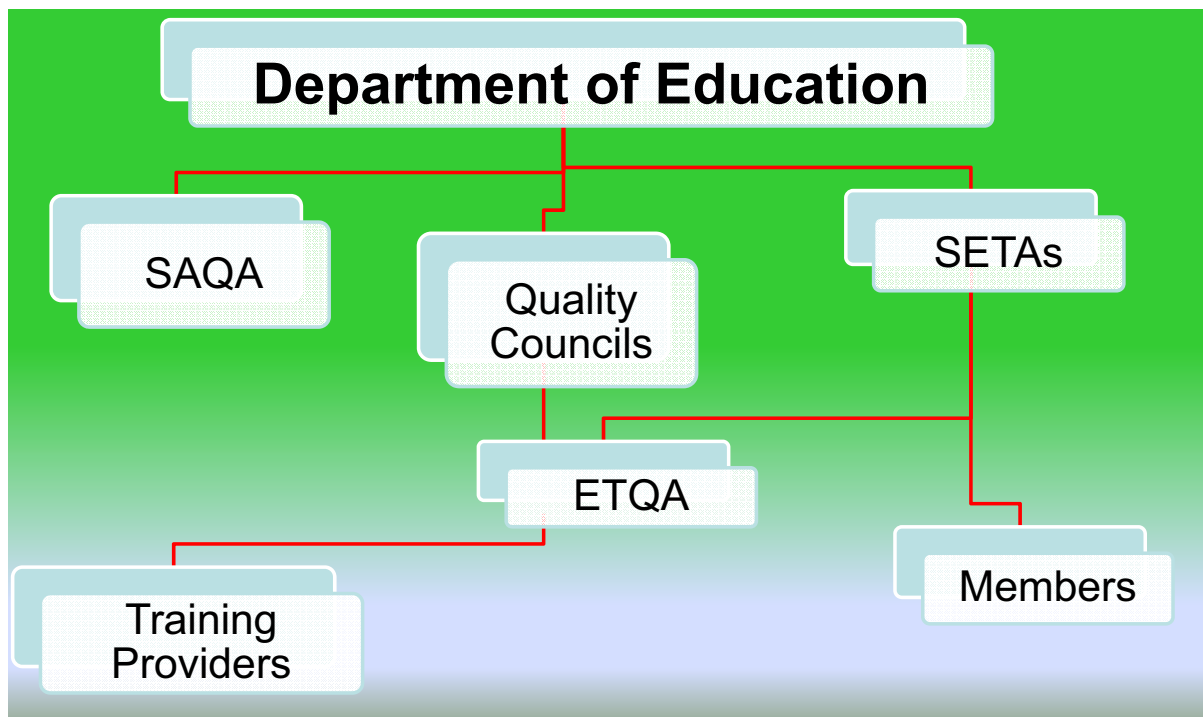
LANDSCAPE



SOUTH AFRICAN SUGAR ASSOCIATION



FUTURE ???



SOUTH AFRICAN SUGAR ASSOCIATION





ACCREDITATION

Full Accreditation - AGRISETA
Institute of Sectoral Occupational Excellence

Programme and
Trade test

MERSETA
ESETA
CHEITA
MQA

Department of Education
Installation rules – examination centre

SOUTH AFRICAN SUGAR ASSOCIATION



ENGINEERING

Discipline	2009 Phase 1	2009 Phase 2	2009 Phase 3	2008 Artisans	2007 Artisans
Diesel Mac	3	4	6	0	0
Electrical	13	15	16	6	2
Fitter	18	10	11	9	16
Fitter & Turner	5	9	3	0	0
Instr Mech	10	4	6	8	7
Millwright	5	8	11	12	5
Ref & Aircon	1	4	1	1	0
Welding	10	5	4	0	1
TOTAL	65	59	58	36	31

SOUTH AFRICAN SUGAR ASSOCIATION





PROCESS

Module	2009	2008	2007
Clarification	13	18	21
Crystallisation, Centrifugals and Drying	12	10	15
Evaporation	11	19	19
Factory Control Calculations	13	18	18
Factory Services	6	11	9
Introduction To Laboratory Work	11	21	19
Juice Extraction	15	15	12
Pan Boiling	11	21	22
Refining	7	5	10
Routine Sugar Analysis	0	21	22

SOUTH AFRICAN SUGAR ASSOCIATION



AGRICULTURAL

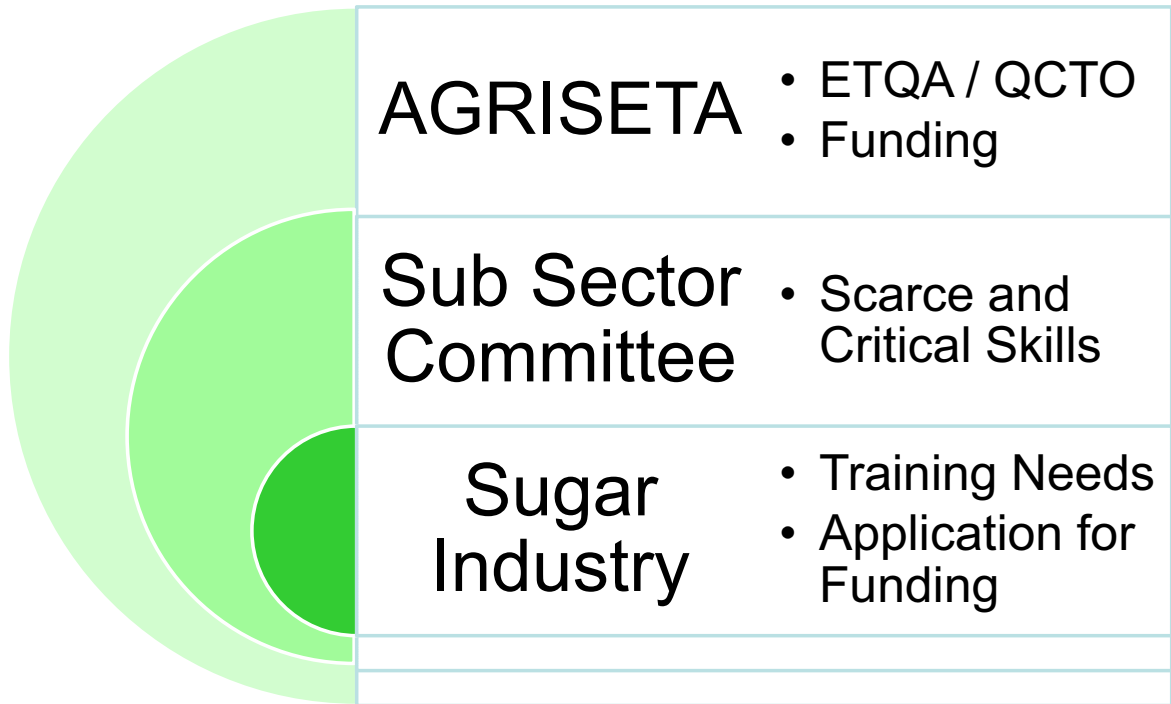
	2009 (6 Months)	2008	2007
Skills Training	1202	1044	3557
Workshop Training	38	29	77
Statutory Training	286	274	602
Supervision Training	71	126	140

SOUTH AFRICAN SUGAR ASSOCIATION





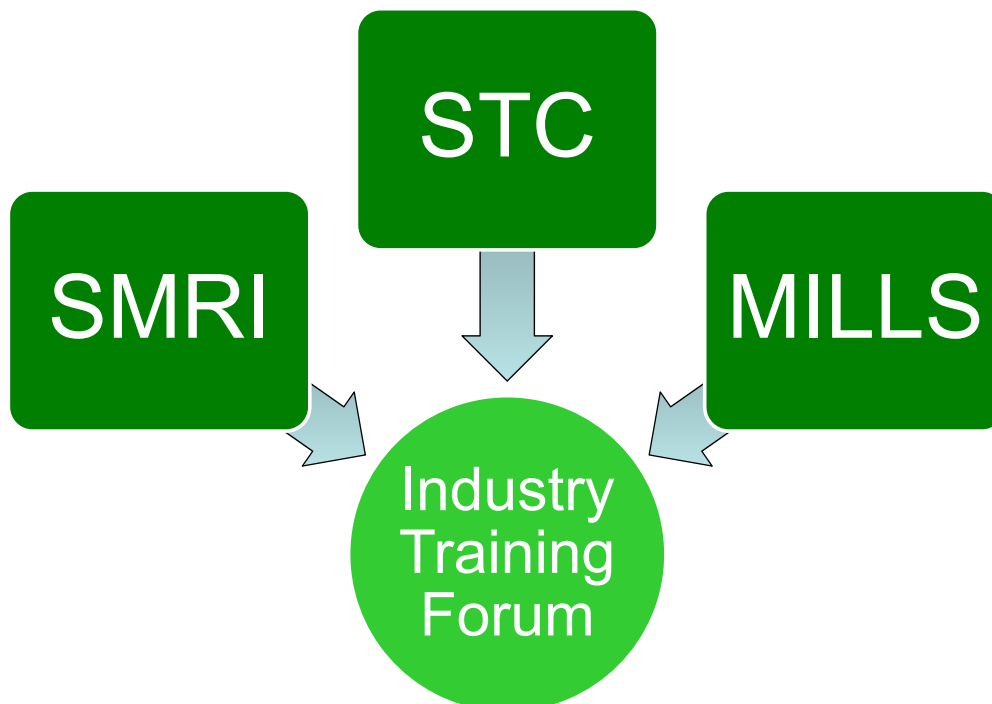
CURRENT REPRESENTATION



SOUTH AFRICAN SUGAR ASSOCIATION



CONSOLIDATION



SOUTH AFRICAN SUGAR ASSOCIATION





FUTURE REPRESENTATION??

Training Forum Giving Direction and Cohesion

AGRISETA

- ETQA / QCTO
- Funding

Sub Sector Committee

- Scarce and Critical Skills

Sugar Industry

- Training Needs
- Application for Funding

